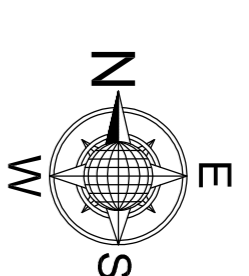


COPY RIGHT OF THIS DRAWING BELONGS TO M/S S.S CONSULTANTS AND SHOULD NOT BE USED FOR ANY PURPOSE OTHER THAN SPECIFIED WITHOUT PRIOR PERMISSION.

NOTES

1. ALL DIMENSIONS ARE IN MILLIMETRES UNLESS OTHERWISE MENTIONED IN DRAWING.
2. CORRELATE WITH THE RELEVANT DRAWINGS FOR THE NECESSARY DETAILS.
3. ANY DISCREPANCY SHALL BE BROUGHT TO THE NOTICE OF CONSULTANTS.

NORTH



LEGEND

- 1. ALL SANITARY PIPE LINES SHALL BE EQUAL TO 25MM.
- 2. ALL INTERNAL WATER SUPPLY PIPES ARE SCHEDULE 40 UNLESS OTHERWISE SPECIFIED.
- 3. WASTE PIPES SHALL BE SCHEDULE 40 UNLESS OTHERWISE SPECIFIED.
- 4. IF THE DISTANCE BETWEEN OUTLET TO MANHOLES IS TOO LONG PROVIDE INSPECTION CHAMBER IN BETWEEN.
- 5. IF THE INVERT LEVEL OF MANHOLE FROM THE FORWARDED GROUND LEVEL IS
- 6. IF THE INVERT LEVEL OF MANHOLE FROM THE FORWARDED GROUND LEVEL IS
- 7. IN G.F. 1000 SWP/1500 WASTE PRENSAL BE DIRECTLY CONNECTED TO REARST MANHOLE/INSPECTION CHAMBER

JOINERY SCHEDULE

TYPE	NAME	SIZE	G.F.	F.F.	S.F.	T.F.
WOODEN DOORS	WD3	1000x2100	4	4	4	-
WOODEN DOORS	WD4	900x2100	8	8	8	1
WOODEN DOORS	WD5	750x2100	12	12	12	-
PRE PAINTED STEEL WINDOWS	PW6	1800x1200	8	8	8	-
PRE PAINTED STEEL WINDOWS	PW6	1200x1200	3	3	3	-
PRE PAINTED STEEL WINDOWS	PW7	900x1200	3	3	3	-
PRE PAINTED STEEL WINDOWS	PW9	1200x900	3	3	3	-
PRE PAINTED STEEL WINDOWS	PW10	900x900	4	4	4	-
PRE PAINTED STEEL VENTILATOR	PV2	600x500	4	4	4	-

REV	DATE	DESCRIPTION	CHKD BY	REFERENCE
1	18-12-2007	CHANGES AS PER STRUCTURAL DESIGNS.	S.S. RAO	C.E

AREAS	AREA IN Sq.Mts	No. of Units	Plinth area of each Unit in Sq.Mts
FLOORS	284.50	4	60.00
G.F.	284.50	4	60.00
F.F.	284.50	4	60.00
S.F.	284.50	4	60.00
TOTAL	853.50	12	180.00

ARCHITECTURAL WORKING DRAWING

Project : **RAJU GANDHI INSTITUTE OF MEDICAL SCIENCES (RIMS) AT ADILABAD, TS**

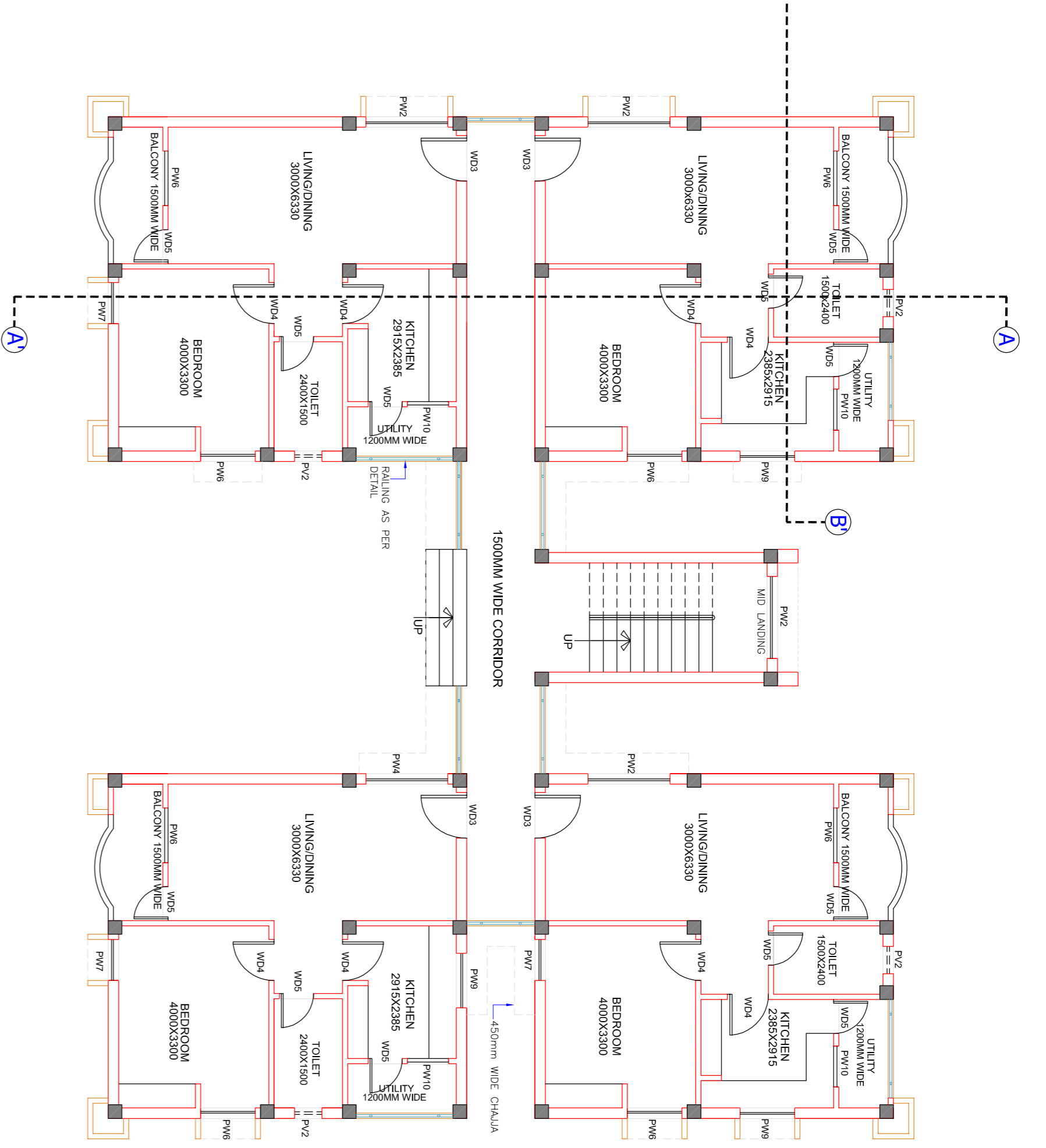
Title : **CLASS-IV STAFF QUARTERS FLOOR PLANS, TERRACE PLAN & TOILET DETAILS**

Client : **TELANGANA MEDICAL SERVICES INFRASTRUCTURE DEVELOPMENT CORPORATION (An Enterprise of Government of Telangana) DM & HS CAMPUS SULTAN BAZAR, KOTI, HYDERABAD.**

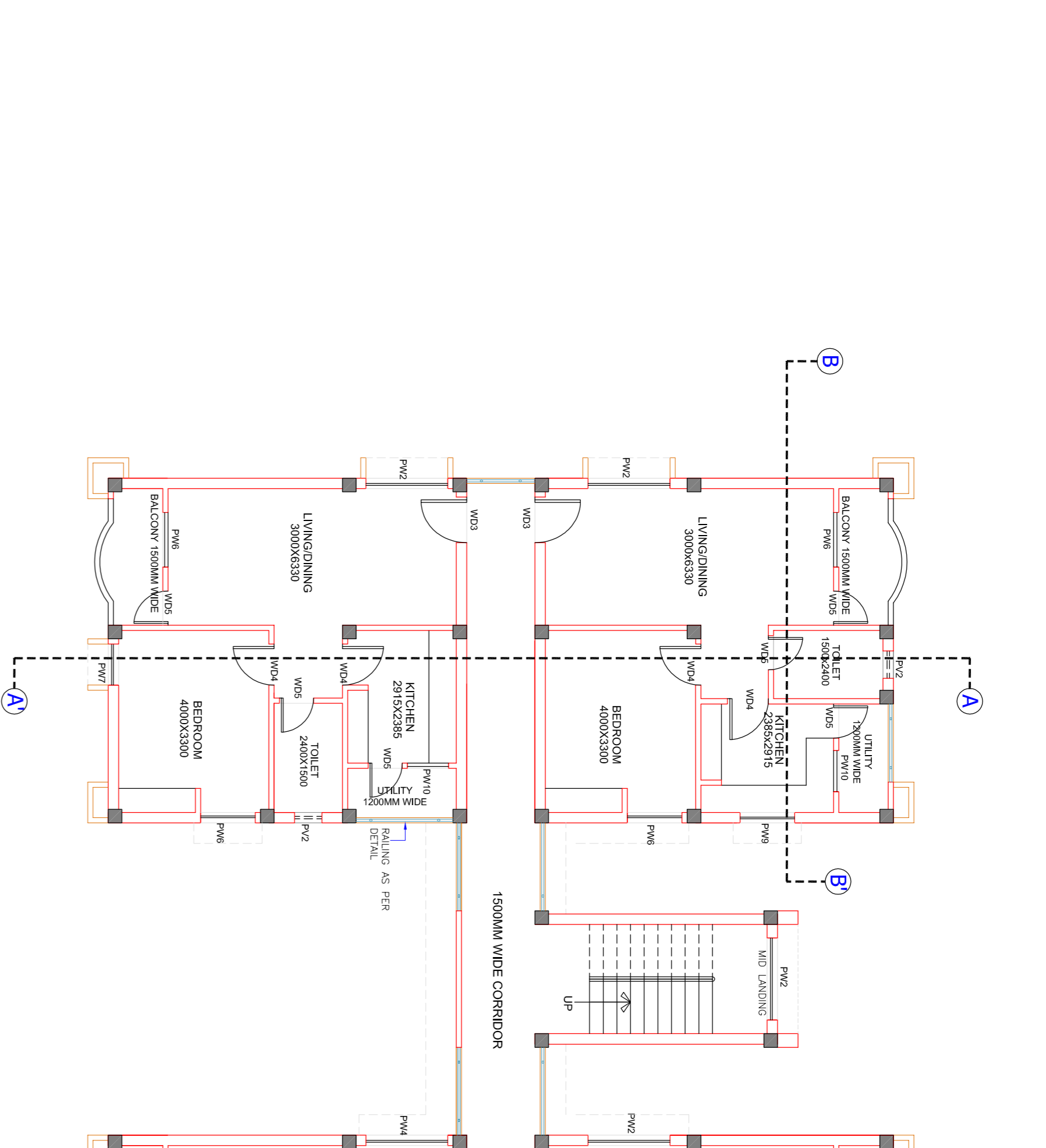
Consultants: **S.S. CONSULTANTS**

PROJECT CONSULTANTS #17&9, JABBAR BUILDINGS, BEGLUPET, HYDRABAD-16. PH: 66310240, 66310954. FAX NO: 040-66312949. email: sscs@17and9@rediffmail.com

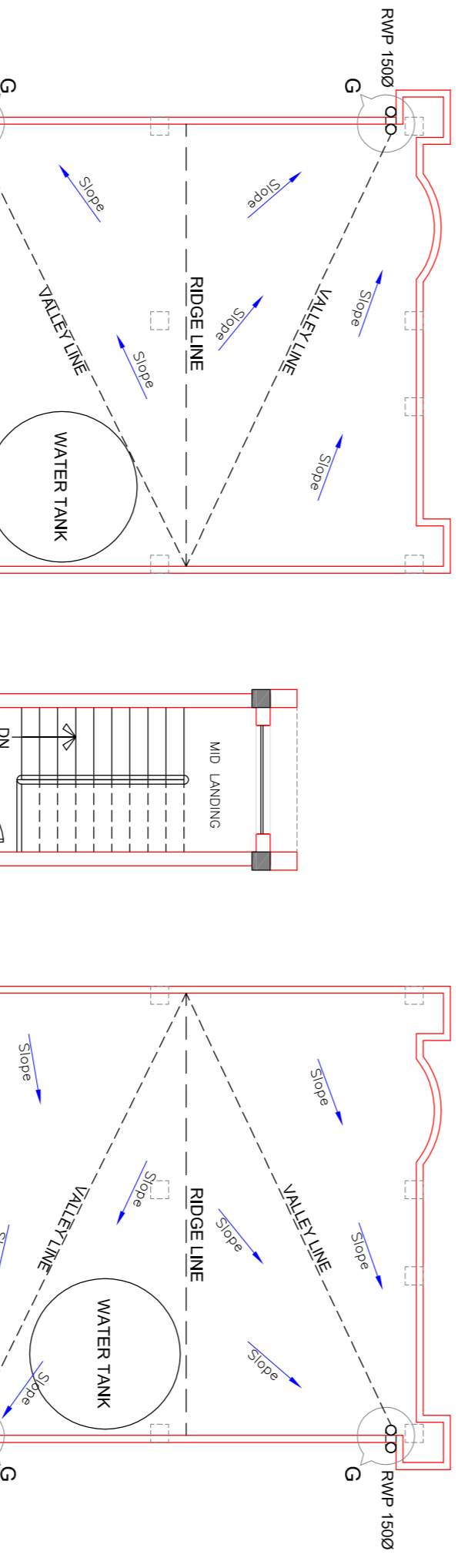
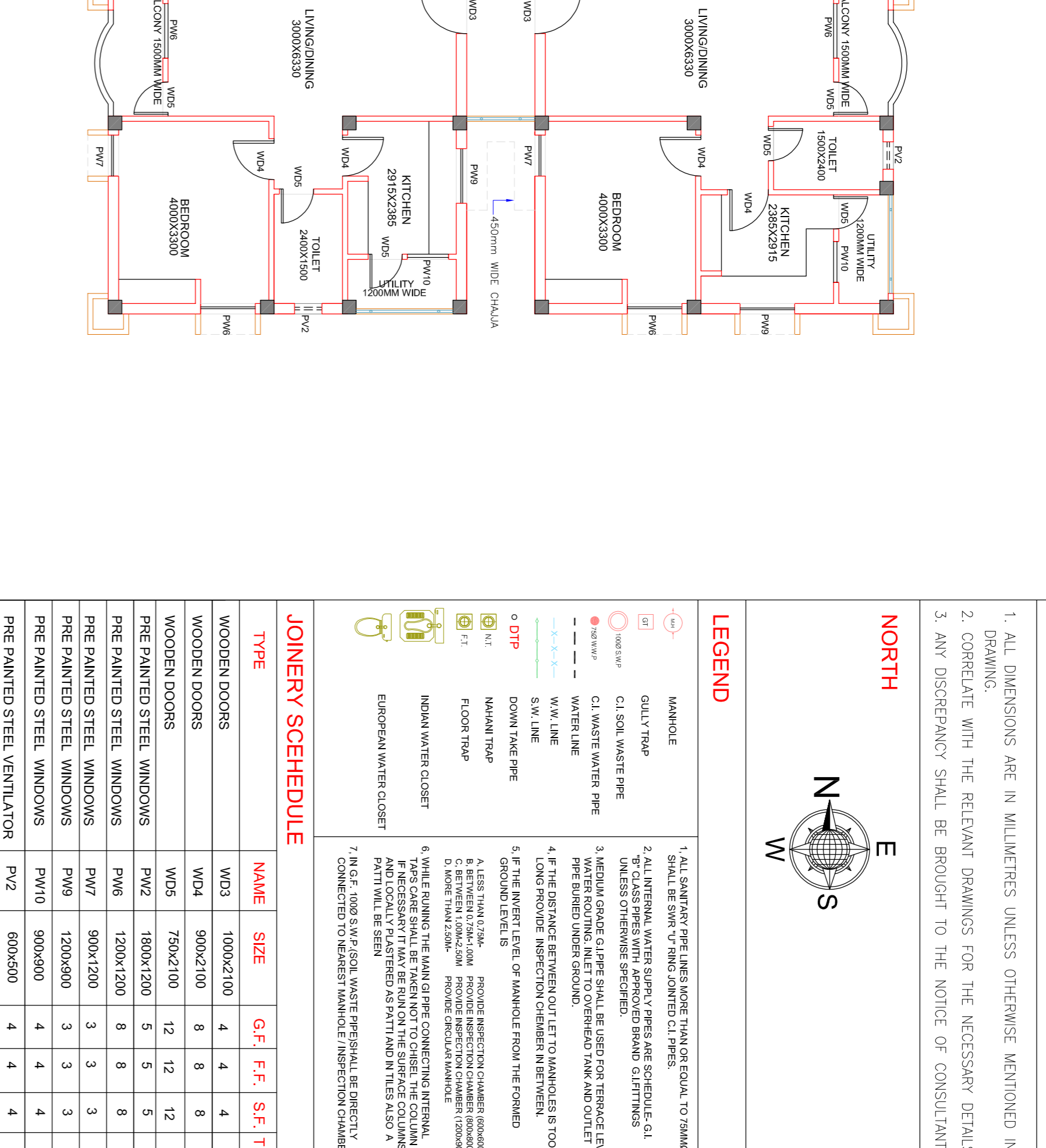
DATE	SCALE	DRAWN BY
21-11-2007	1:100	LAKMAV
DESIGNED BY	CHKD BY	REV.
N.V.S. RAO	S.S. RAO	



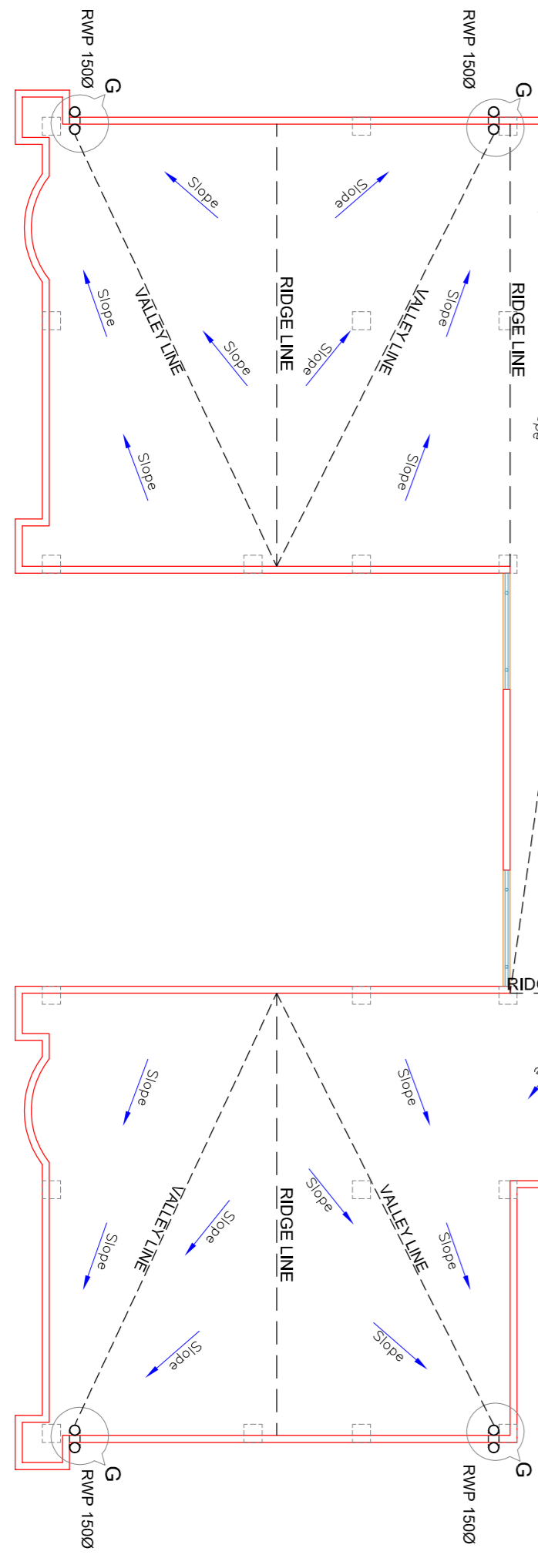
GROUND FLOOR PLAN



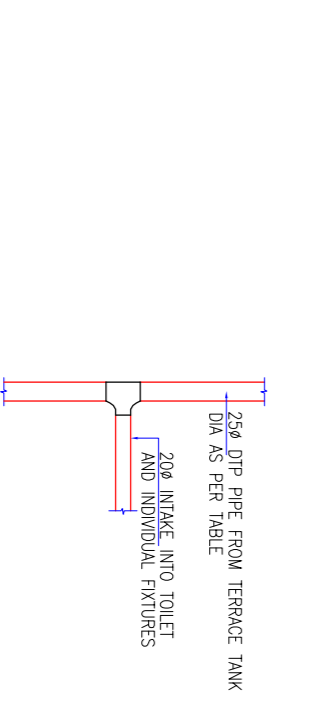
TYPICAL COMMON TOILET DETAILS (FIRST & SECOND FLOORS)



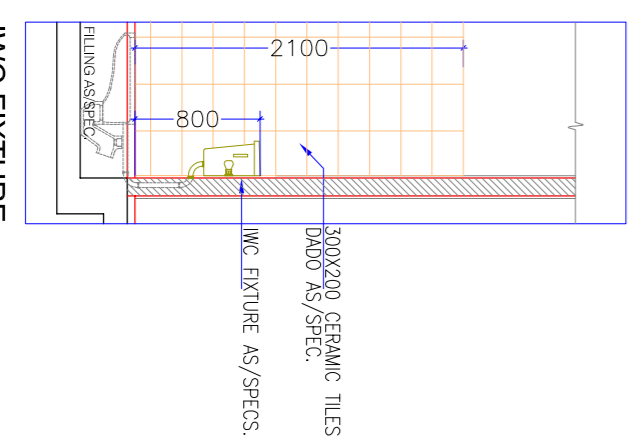
TYPICAL RAIN WATER DOWN TAKE PIPE FIXING DETAILS AT 'G'



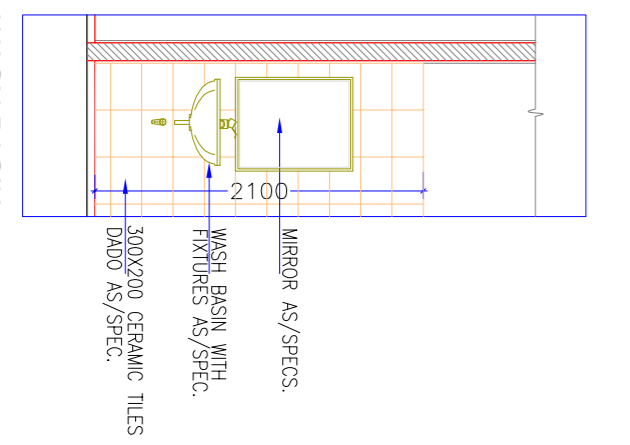
TYPICAL WATER SUPPLY FLOW DIAGRAM WHEREVER SINGLE TOILET/ WASH BASIN OR SINK IS LOCATED



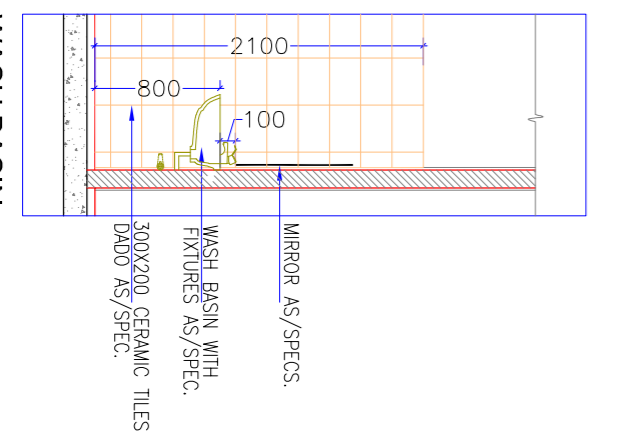
TYPICAL WATER SUPPLY FLOW DIAGRAM WHEREVER SINGLE TOILET/ WASH BASIN OR SINK IS LOCATED



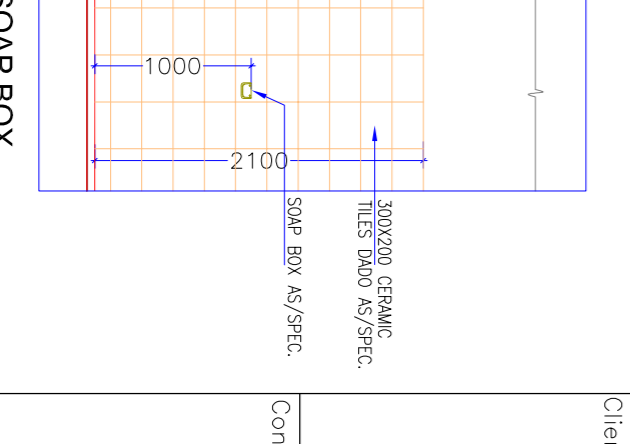
TYPICAL COMMON TOILET DETAILS



TYPICAL COMMON TOILET DETAILS



TYPICAL COMMON TOILET DETAILS



TYPICAL COMMON TOILET DETAILS